

Picasso & Matisse:
An Exhibition of Prints
October 4 - 25, 2014

1

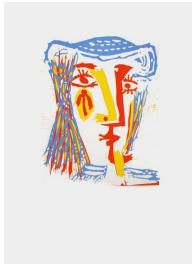


Pablo Picasso

Fumeur barbu, 1964 (27 August, Mougins)
Sugarlift aquatint with etching printed in color a la poupee on Auvergne Richard de Bas laid paper with Richard de Bas watermark

Image dimensions: 16 1/4 x 12 1/2 inches
Sheet dimensions: 22 1/8 x 15 7/8 inches
Edition 1 of 15 artist's proofs
Signed lower right, in pencil
Inscribed lower left in pencil: "epreuve d'artiste"
Dated "II 27.8.64." in reverse upper right, in plate
(PaP-9)

2



Pablo Picasso

Femme au Chapeau de Paille bleue, 1962 (16 January, Mougins)
Linocut printed in red, yellow and blue with Arches watermark
Image dimensions: 13 3/8 x 10 5/8 inches
Sheet dimensions: 24 3/4 x 17 1/2 inches
Edition 1 of 87 impressions
Marina Picasso Collection oval stamp on verso
(PaP-12)

3



Pablo Picasso

Joseph et la femme de Potiphar, d'après le Tintoret et Rembrandt, 1962 (12 and 29 July, Mougins)
Linocut printed on Arches wove paper
10 3/4 x 13 5/8 inches
Edition 1 of 3 impressions, of which one was printed on Arches, of the second (final) state
(PaP-13)

4



Pablo Picasso

Tete de femme III, Portrait de Dora Maar, 1939
(between January and June, Paris)
Aquatint and scraper printed in four colors
on Montval paper
Edition of 105
(PaP-10)

5



Pablo Picasso

*Jeune Femme (Unique proof with Picasso
handwritten signed dedication for the Centenaire
Mourlot)*, 1949 (17 February)
Lithograph printed in black ink
signed, dedicated and dated by the artist,
lower right in image, in pencil: "A /
Mourlot / pour son Centenaire / Vallauris
1.25.2.53."
(PaP-19)

6



Pablo Picasso

Tete de Femme IV, Portrait de Dora Maar,
1939 (20 April)
Color aquatint printed on Montval paper
Edition of 104
Dated in the plate "20.4.1939"
(PaP-11)

7



Pablo Picasso

Portrait de Dora Maar au Chignon. I, 1936 (21
October, Paris)
Drypoint and Echoppe guillochée on
Montval laid paper
Image dimensions: 13 3/4 x 9 3/4 inches
Sheet dimensions: 20 1/4 x 15 3/4 inches
Edition 1 of 3 impressions before
steelfacing
(PaP-15)

8



Pablo Picasso

Femme Au Fautenil No. 4 (d'après le violet),
1948
Lithograph on Arches vellum with Arches
watermark
Edition 47 of 50, of the fifth (final) state
Signed by the artist lower right, in pencil
Numbered "47/50" lower left, in pencil
(PaP-18)

9



Pablo Picasso

Femme au Fauteuil No. 1 (d'après le rouge),
1949 (13 January)

Lithograph printed on Arches wove
Image dimensions: 27 3/8 x 21 3/8 inches
Sheet dimensions: 29 7/8 x 22 1/4 inches
Edition 1 of 6 proofs reserved for the artist
and the printer of the second state of
transfer; there was no edition
Initialed by Fernand Mourlot, annotated
with his reference 134 / 2° etat du report
and numbered 6/6 on verso, in pencil
(PaP-14)

10



Pablo Picasso

Portrait de Dora Maar au Chignon. II, 1936
(October, Paris)

Drypoint printed on Montval paper
Image dimensions: 13 3/4 x 9 3/4 inches
Sheet dimensions: 20 1/4 x 15 3/4 inches
Edition 1 of 4 impressions before
steelfacing
(PaP-16)

11



Henri Matisse

Danseuse endormie au divan from Dix Danseuses,
1925

Lithograph, printed on Arches paper
11 x 18 inches
Edition 1 of 8 H.C.
Inscribed "ep. A" (aside from the edition of
130)
Signed in pencil
(HMa-9)

12



Henri Matisse

Eva III, 1948

Lithograph on Arches paper
Framed dimensions: 34 x 29 inches
Paper dimensions: 18.75 x 15
Edition 24 of 25
Signed and numbered
(HMa-10)

13



Henri Matisse

Odalisque voile, 1925

Lithograph, printed on japan paper
21 1/4 x 17 1/4 inches
Edition Essai from edition of 50
Signed in pencil
(HMa-7)

14



Henri Matisse

Les Yeux noirs, 1913

Lithograph, printed on japan paper

17 5/8 x 12 3/4 inches

Edition Etat 3/4 aside from edition of 50

Signed in pencil

(HMa-8)

15



Pablo Picasso

Au Bain, Femme au Chapeau a Fleurs et Femme drapée dans une Serviette (Suite Volland 79),

1934 (29 January, Paris)

Etching printed on Montval paper with

Picasso watermark

Edition of 260

(PaP-17)

16



Pablo Picasso

Deux Femmes Se Reposant (Suite Volland 10),
1931

drypoint on laid montval paper with a

Picasso watermark

Image Dimensions: 11 3/4 x 14 1/4 inches

Sheet Dimensions: 13 1/4 x 17 1/2 inches

Edition of 260

Signed lower right, in pencil

(PaP-3)

17



Pablo Picasso

Sculpteur au Repos avec Marie-Therese et sa Representation en Venus pudique (Suite Volland 51), 1933 (27 March. III, Paris)

Etching printed on laid Montval with

Montgolfier watermark

Edition of 50

Signed lower right, in pencil

(PaP-5)

18



Pablo Picasso

Vieux Sculpteur et Jeune Modele avec le Portrait sculpté du Modele (Suite Volland 63), 1933 (3 April, Paris)

etching printed on Montval paper with

Montgolfier watermark

Image dimensions: 7 5/8 x 10 1/2 inches

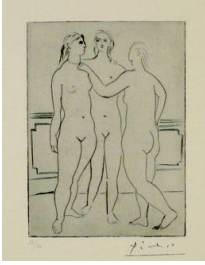
Sheet dimensions: 13 3/8 x 17 1/2 inches

Edition of 50 with large margins

Signed lower right, in pencil

(PaP-6)

19



Pablo Picasso

Le Collier, 1923 (Editioned in 1961)

Drypoint on tinted Arches paper from
Caisee a Remords

Sheet dimensions: 12 1/4 x 9 5/8 inches

Edition of 50

Stamp signed lower right, numbered lower
left, in pencil

(PaP-8)

20



Pablo Picasso

*Marie-Therese regardant son Corps sculpte (Suite
Vollard 73)*, 1933 (4 May, Paris)

Etching printed on Montval paper with
Montgolfier watermark

Image dimensions: 10 3/8 x 7 1/2 inches

Sheet dimensions: 19 3/4 x 15 1/4

Edition of 50 with large margins

Signed lower right, in pencil

(PaP-7)