

100 UNDER 100

9

KELLI VANCE

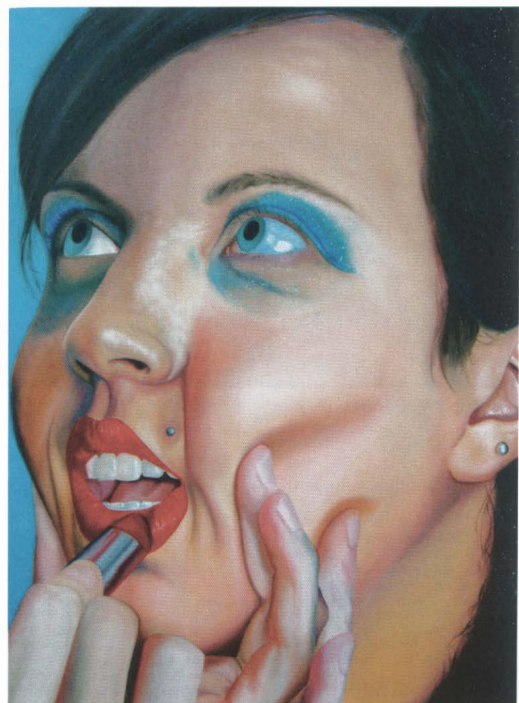
*29, Long Beach, California,
via Houston, Texas*



"She's Fabulous But She's Evil" (2009) by Kelli Vance. Oil on canvas, 72 x 72 inches. Courtesy of Samuel Freeman Gallery.

Devoted, eager, and whip-smart, Kelli Vance's early success out of graduate school was not unexpected. While her slightly pulpy paintings can easily be read as psychological portraits of women, the varied interpretations and emotions they produce often reveal more about the viewer than the subjects. Is that subject a seductress or a victim? Is this one experiencing pain or pleasure? The anonymity/obscurity of the actions hinted at just off-camera further increase the tension in the work. Borrowing devices often used in photography—tight cropping, suspended narrative, Gaussian blur, etc.—Vance pays homage to such artists as Marilyn Minter and Cindy Sherman...and yet she dwells completely in a territory all her own.

—Erin Siudzinski, Assistant Director,
McClain Gallery



"And Just Who Is It That You Want to Be?" (2011) by Kelli Vance. Oil on canvas, 54 x 40 inches. Courtesy of Samuel Freeman Gallery.