

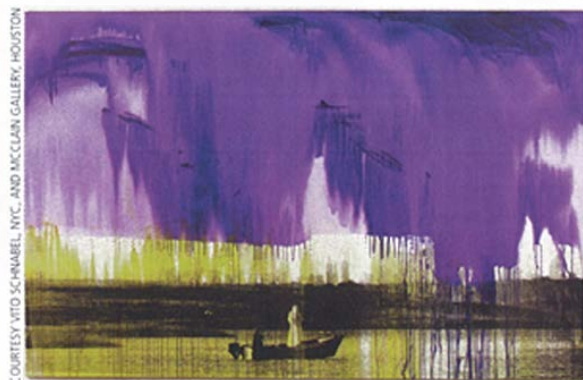
# IS BRUCE IN THE HOUSE?

**A**n artist collaborative that smartly skewers the market and more, **The Bruce High Quality Foundation**, lands at **McClain Gallery** for its Texas debut (through December 6). In this eagerly anticipated happening, the Whitney Biennial-exhibited collective casts a controversial net around art history and its players.

The installation in question, "Isles of the Dead," engages in a strange tête-à-tête across time with late-19th-century Swiss symbolist painter **Arnold Böcklin**, whose canvases of the same name, circa 1880 to 1886, emitted fin de siècle sensibility by alluding to Charon ferrying souls across the River Styx to a dark afterlife. The grand project staged at McClain samples from Warhol, Picasso and Velázquez, as well as the collective's own Böcklin-inspired Manhattan performance sailing the East River towards a garbage dump. Don't expect a congenial meet-and-greet with BHQF; the collective operates under cloak-and-dagger anonymity; see what we mean in our exclusive and highly enigmatic online Q&A coming next month. *Catherine D. Ansporn*



The Bruce High Quality Foundation's *Self Portrait*, 2011, at McClain Gallery



The Bruce High Quality Foundation's *Isle of the Dead*, 2014, at McClain Gallery